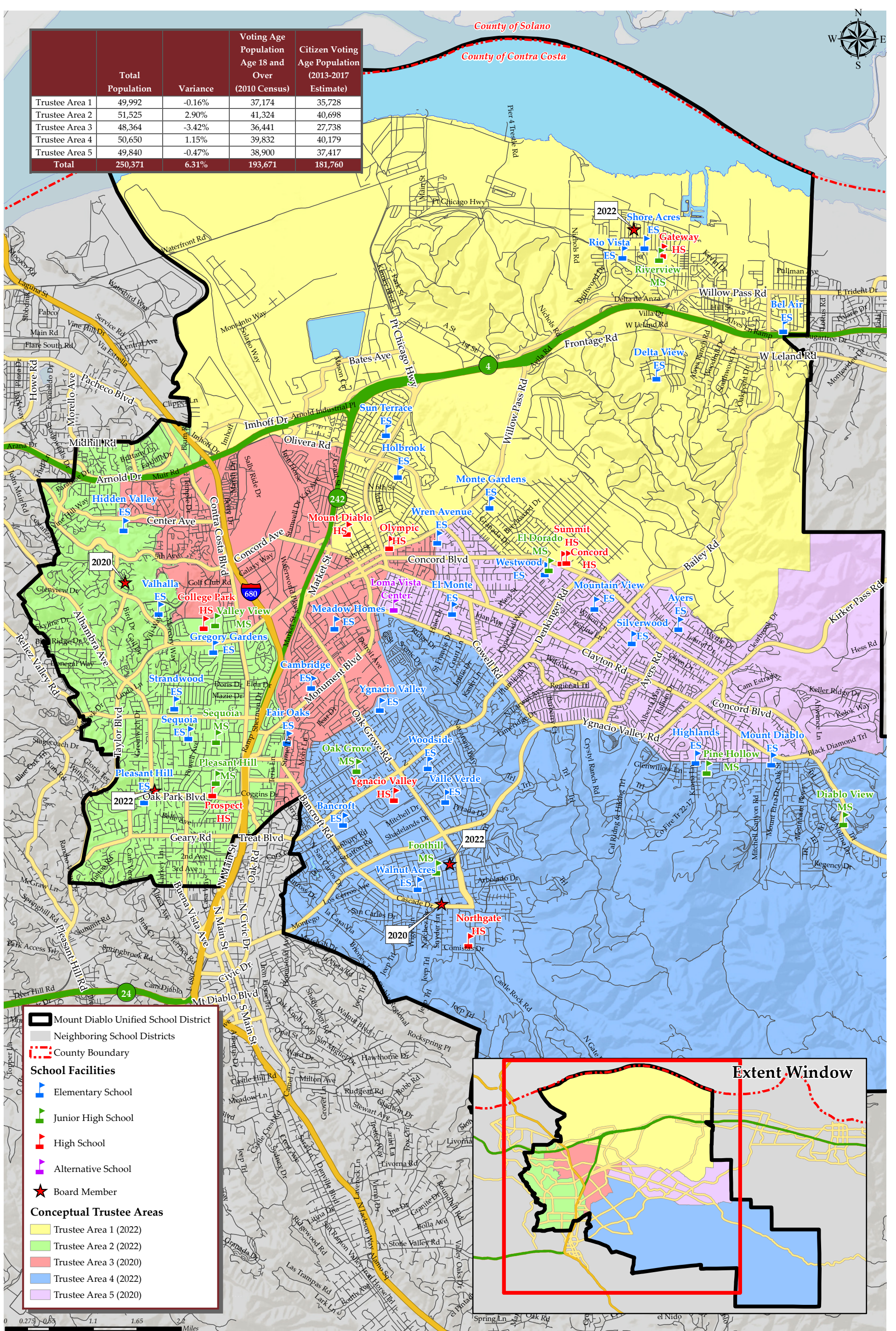


# MT DIABLO UNIFIED SCHOOL DISTRICT CONCEPTUAL TRUSTEE AREAS - SCENARIO PINK

	Total Population	Variance	Voting Age Population Age 18 and Over (2010 Census)	Citizen Voting Age Population (2013-2017 Estimate)
Trustee Area 1	49,992	-0.16%	37,174	35,728
Trustee Area 2	51,525	2.90%	41,324	40,698
Trustee Area 3	48,364	-3.42%	36,441	27,738
Trustee Area 4	50,650	1.15%	39,832	40,179
Trustee Area 5	49,840	-0.47%	38,900	37,417
<b>Total</b>	<b>250,371</b>	<b>6.31%</b>	<b>193,671</b>	<b>181,760</b>



0 0.275 0.55 1.1 1.65 2.2 Miles  
September 2019

**MT DIABLO UNIFIED SCHOOL DISTRICT**  
**CONCEPTUAL TRUSTEE AREAS - SCENARIO PINK**

Total Population (2010 Census)						
	Trustee Area 1	Trustee Area 2	Trustee Area 3	Trustee Area 4	Trustee Area 5	Variance
Population	49,992	51,525	48,364	50,650	49,840	
Population Variance	-82	1,451	-1,710	576	-234	
	-0.16%	2.90%	-3.42%	1.15%	-0.47%	6.31%
Hispanic/Latino	18,946	6,437	21,612	5,287	9,008	
	37.90%	12.49%	44.69%	10.44%	18.07%	
White	17,832	35,983	16,755	35,371	31,519	
	35.67%	69.84%	34.64%	69.83%	63.24%	
Black/ African American	3,803	1,059	2,152	755	1,248	
	7.61%	2.06%	4.45%	1.49%	2.50%	
American Indian/ Alaska Native	168	125	150	110	156	
	0.34%	0.24%	0.31%	0.22%	0.31%	
Asian	6,944	5,650	5,691	6,893	5,534	
	13.89%	10.97%	11.77%	13.61%	11.10%	
Native Hawaiian/ Other Pacific Islander	375	87	339	158	155	
	0.75%	0.17%	0.70%	0.31%	0.31%	
Other	119	114	98	131	143	
	0.24%	0.22%	0.20%	0.26%	0.29%	
Two or More Races	1,805	2,070	1,567	1,945	2,077	
	3.61%	4.02%	3.24%	3.84%	4.17%	

Population 18 and Over (2010 Census)						
	Trustee Area 1	Trustee Area 2	Trustee Area 3	Trustee Area 4	Trustee Area 5	
Population	37,174	41,324	36,441	39,832	38,900	
Population Variance	-1,560	2,590	-2,293	1,098	166	
	-4.03%	6.69%	-5.92%	2.83%	0.43%	
Hispanic/Latino	12,238	4,531	14,209	3,620	6,122	
	32.92%	10.96%	38.99%	9.09%	15.74%	
White	15,131	29,850	14,376	28,829	25,818	
	40.70%	72.23%	39.45%	72.38%	66.37%	
Black/ African American	2,715	858	1,573	629	947	
	7.30%	2.08%	4.32%	1.58%	2.43%	
American Indian/ Alaska Native	139	115	122	80	128	
	0.37%	0.28%	0.33%	0.20%	0.33%	
Asian	5,541	4,713	4,878	5,520	4,517	
	14.91%	11.40%	13.39%	13.86%	11.61%	
Native Hawaiian/ Other Pacific Islander	264	73	241	115	117	
	0.71%	0.18%	0.66%	0.29%	0.30%	
Other	85	79	72	77	92	
	0.23%	0.19%	0.20%	0.19%	0.24%	
Two or More Races	1,061	1,105	970	962	1,159	
	2.85%	2.67%	2.66%	2.42%	2.98%	

Citizens by Voting Age Population Estimate (2013-2017)						
	Trustee Area 1	Trustee Area 2	Trustee Area 3	Trustee Area 4	Trustee Area 5	
Population	35,728	40,698	27,738	40,179	37,417	
Population Variance	-624	4,346	-8,614	3,827	1,065	
	-1.72%	11.96%	-23.70%	10.53%	2.93%	
Hispanic/Latino	9,318	3,949	7,087	4,141	5,274	
	26.08%	9.70%	25.55%	10.31%	14.10%	
White	15,620	29,734	13,728	28,862	25,762	
	43.72%	73.06%	49.49%	71.83%	68.85%	
Black/ African American	3,062	1,115	1,973	785	1,325	
	8.57%	2.74%	7.11%	1.95%	3.54%	
American Indian/ Alaska Native	163	32	96	81	92	
	0.46%	0.08%	0.35%	0.20%	0.25%	
Asian	6,031	3,837	3,623	5,054	3,694	
	16.88%	9.43%	13.06%	12.58%	9.87%	
Native Hawaiian/ Other Pacific Islander	235	236	55	51	149	
	0.66%	0.58%	0.20%	0.13%	0.40%	
Other	0	0	0	0	0	
	0.00%	0.00%	0.00%	0.00%	0.00%	
Two or More Races	1,299	1,795	1,176	1,205	1,121	
	3.64%	4.41%	4.24%	3.00%	3.00%	

ACS Age Groups (2017 Estimates) <sup>[1]</sup>						
	Trustee Area 1	Trustee Area 2	Trustee Area 3	Trustee Area 4	Trustee Area 5	
Under 18 Years Old	24.29%	18.49%	23.08%	20.38%	21.70%	
18-24 Years Old	10.01%	7.21%	9.00%	6.37%	6.97%	
25-34 Years Old	14.66%	14.64%	18.58%	9.69%	14.75%	
35-54 Years Old	27.91%	26.90%	28.43%	27.29%	26.31%	
55-64 Years Old	12.67%	14.86%	11.16%	15.83%	13.81%	
Over 64 Years Old	10.46%	17.90%	9.76%	20.43%	16.46%	
Total	100.00%	100.00%	100.00%	100.00%	100.00%	

ACS Renters vs Owners (2017 Estimates) <sup>[1]</sup>						
	Trustee Area 1	Trustee Area 2	Trustee Area 3	Trustee Area 4	Trustee Area 5	
Total Owners	63.61%	61.69%	37.65%	80.47%	71.57%	
Total Renters	36.39%	38.31%	62.35%	19.53%	28.43%	
Total	100.00%	100.00%	100.00%	100.00%	100.00%	

ACS Profile Income by Household (2017 Estimates) <sup>[1]</sup>						
	Trustee Area 1	Trustee Area 2	Trustee Area 3	Trustee Area 4	Trustee Area 5	
Income \$0-25k	18.08%	12.08%	17.33%	7.12%	11.48%	
Income \$25-50k	18.33%	13.54%	20.85%	10.93%	13.92%	
Income \$50-100k	30.82%	24.21%	33.30%	23.61%	29.57%	
Income \$100-150k	17.38%	22.08%	18.06%	17.98%	24.68%	
Income \$150k+	15.38%	28.10%	10.45%	40.35%	20.36%	
Total	100.00%	100.00%	100.00%	100.00%	100.00%	

[1] Based off estimates prepared by the Census Bureau